



GMT MONTHLY MEMBERSHIP PROGRESS REPORT

Results as of: 10/31/2019

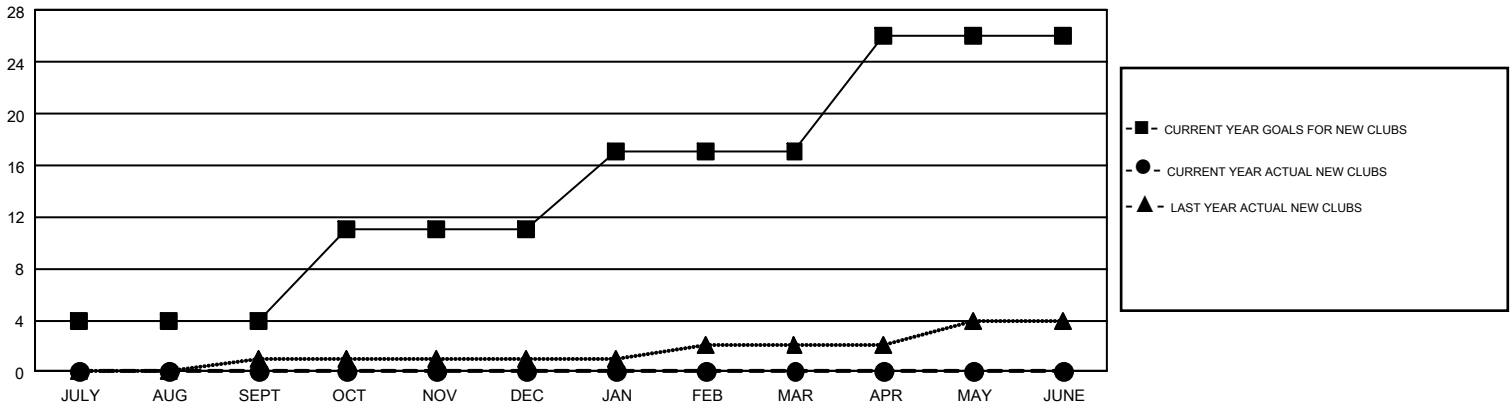
GMT Constitutional Area 1, Group N

GMT: OPEN

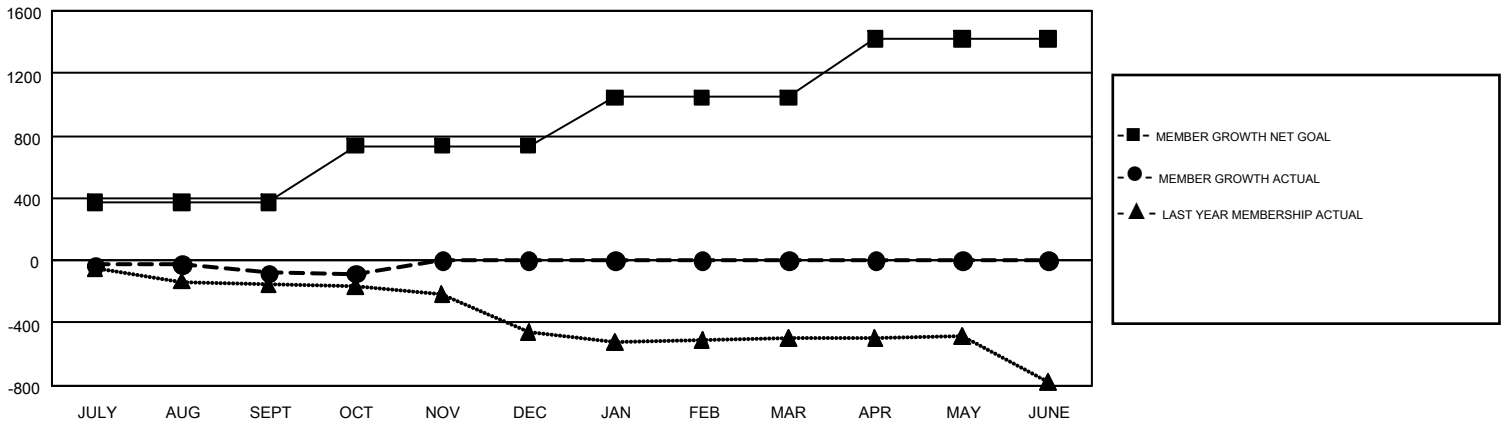
REPORT DOES NOT INCLUDE CLUBS IN UNDISTRICTED AREAS.

Clubs				Members			
RESULTS FOR 2019-2020				RESULTS FOR 2019-2020			
QUARTER	NEW CLUB GOAL	NEW CLUBS	DROPPED CLUBS	QUARTER	MEMBER GROWTH NET GOAL	MEMBER GROWTH ACTUAL	DROPPED MEMBERS ACTUAL (including transfers)
JULY/AUG/SEPT	4	0	1	JULY/AUG/SEPT	371	370	407
OCT/NOV/DEC	7	0	0	OCT/NOV/DEC	365	109	89
JAN/FEB/MAR	6	0	0	JAN/FEB/MAR	311	0	0
APR/MAY/JUNE	9	0	0	APR/MAY/JUNE	374	0	0

GOALS AND ACTUAL NEW CLUBS CUMULATIVE



GOALS AND ACTUAL MEMBERS CUMULATIVE



DROPPED CLUBS: 1	198 CLUBS OF 595 ADDED 1 OR MORE NEW MEMBERS	GENDER DISTRIBUTION MALE 9,294 (67.02%) FEMALE 4,573 (32.98%)
DROPPED MEMBERS DECEASED 56 CLUB CANCELLED 0 OTHER 440 TOTAL 496	CLICK HERE FOR CUMULATIVE MEMBERSHIP DATA	TOTAL FAMILY UNIT MEMBERS 2,643 FAMILY MEMBERS PAYING HALF DUES 1,351